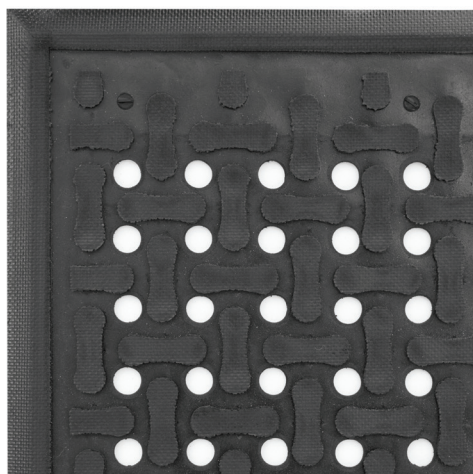


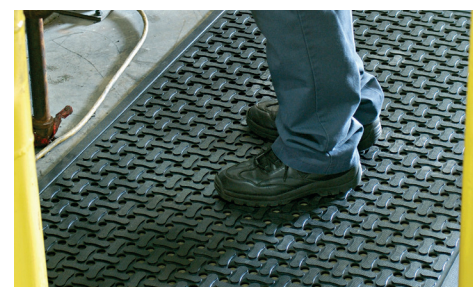
Comfort Flow

Anti-Fatigue Mats • Indoor

Comfort Flow is a flow-through mat with excellent anti-fatigue properties designed for wet areas where grease, oil, and chemicals may be present.



- Anti-microbial treated to guard against odours and degradation.
- Nitrile Cushion is oil, grease, chemical resistant and ideal for wet applications.
- Static Dissipative certified allowing for use around sensitive electronic equipment.
- Lightweight and easy to clean.
- Welding safe.



0032478 280 304

www.be-mark.be

Comfort Flow

Anti-Fatigue Mats • Indoor



Standard Sizes (cm)

54x86

86x142

86x277

Size Tolerance: +/- 5%



Grease proof



Ideal for wet applications



Thickness 9,5 mm

Specifications

Colour: Black
Thickness: 9,5 mm
Rubber: Nitrile Rubber
Durometer: 50 to 55



0032478 280 304

www.be-mark.be